



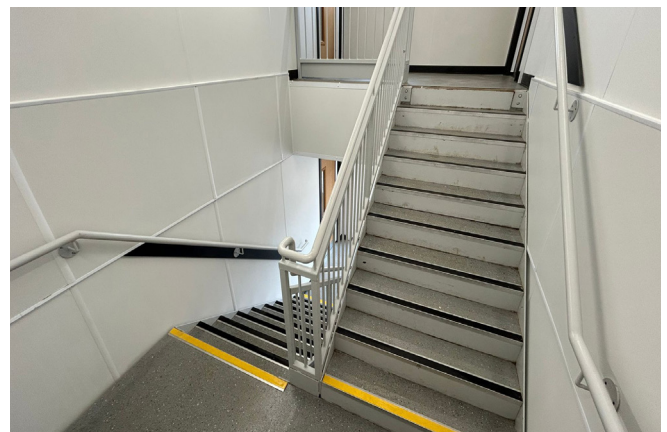
**Project:** Brackenfield SEND School | **Location:** Nottinghamshire | **Contract Type:** Relocation

## Project Overview


Following the successful relocation of six modular units in 2004, Pickering's were invited back to Brackenfield SEND School to support a further phase of expansion. The project involved installing 12 modules, which had been stored at a local depot for the client, to create a new two-storey teaching block providing four additional classrooms and toilets.

## The Challenge

The school required additional teaching space within a very tight timeframe, with a firm requirement for the new classrooms to be operational for the start of the academic year. This meant all works had to be carefully planned and delivered during the school holiday period, leaving no margin for delay. In addition, the project required full coordination of building, mechanical, and electrical elements under a single contractor to ensure a seamless delivery.



**Get In  
Touch.**

 0333 300 2345

 [www.pickeringshire.co.uk](http://www.pickeringshire.co.uk)

 [sales@pickeringshire.co.uk](mailto:sales@pickeringshire.co.uk)

 @pickeringshire



## The Solution

Pickering's took on the role of main contractor, delivering a fully turnkey solution from initial groundworks through to final commissioning and building control approvals. The scheme included the construction of foundations, installation and connection of all services, and the integration of fire alarm and data systems. Existing air conditioning units were recommissioned to ensure the classrooms were fully functional from day one, while external landscaping works completed the project to a high standard.

## Programme Delivery

Planning permission was granted on 24th June, allowing Pickering's to mobilise immediately at the start of the school holidays. Through careful planning and efficient delivery, the full installation and fit-out of the two-storey modular building was completed in just seven weeks.

## The Outcome

The project was handed over on time, with four fully operational classrooms ready for the new school year. The use of modular construction enabled a rapid, cost-effective solution while maintaining high standards of quality and compliance. The successful delivery further strengthened the ongoing relationship between Pickering's and Brackenfield SEND School, demonstrating the value of a trusted delivery partner for time-critical education projects.

Pickering's worked well to our tight timescale to turn this project around during the school holidays, with good communication every step of the way. A great set of guys on site that delivered everything we asked for. We are really pleased with the end results!

Natalie Collins - Business Operations Manager